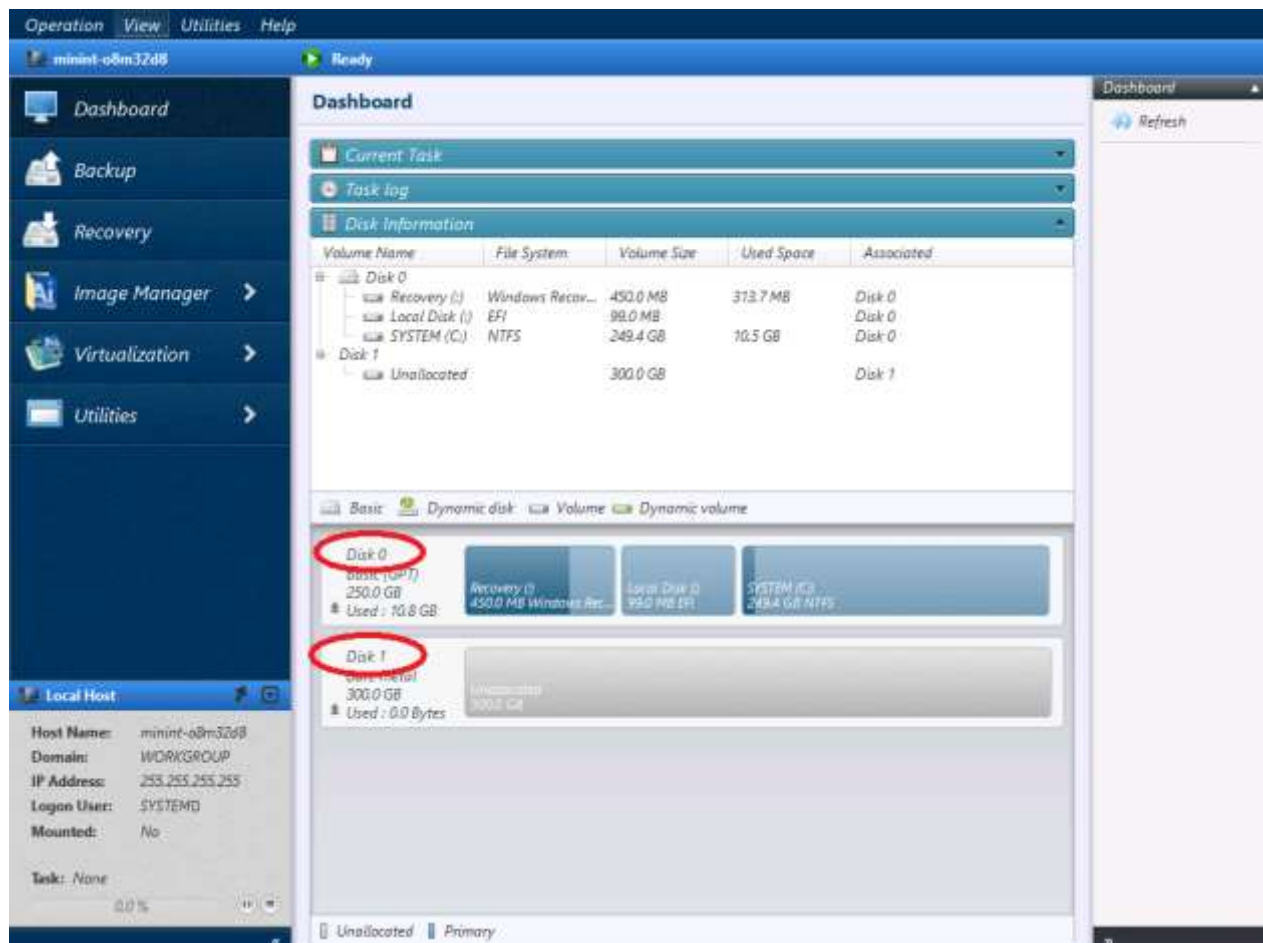


# How to clone disk with ActiImage Protector

1. Make sure you use ActiImage Protector 2018 (5.0.1.4417 bzw. 5.0.1.4448) or more recent version.
2. Start ActiImage Protector Recovery Environment (Windows PE). Make sure the original source disk and the new target disk are both already connected to the system.
3. In the Dashboard all disks are displayed, in numerical order, starting with disk 0, 1, 2... Locate the disk number of the original source disk and the new target disk.

**Note:** It is possible that the new target disk can be disk 0 and the original source disk can be disk 1.



- Go to the menu “Utilities” > “Launch AIP CLI” and press OK. Use the following command, which will start the disk copy functionality (cloning) from original source disk 0 to new target disk 1:

**restoredisk v2v!00 disk1 diskmeta force**

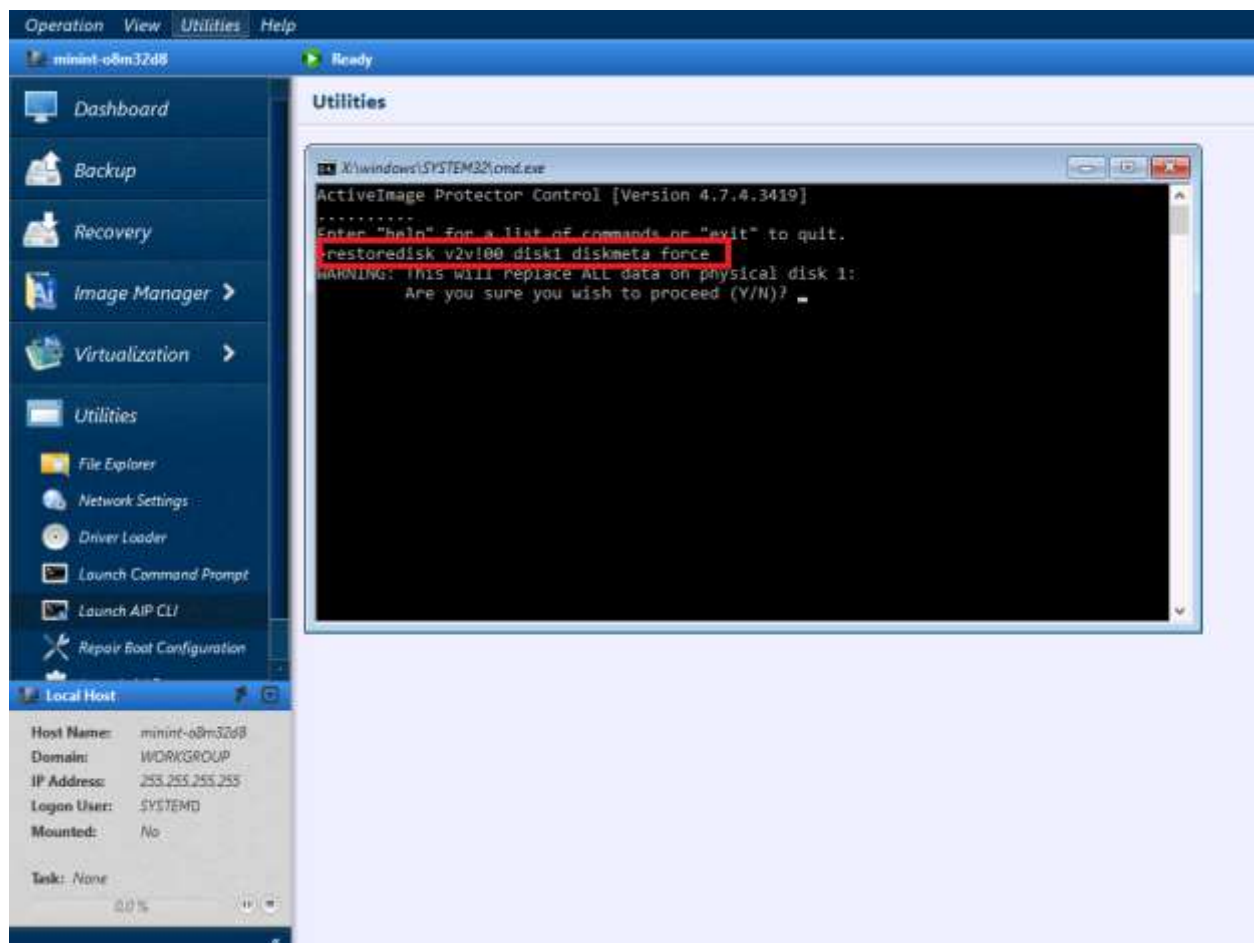
The values highlighted in red show the number of the original source disk and the new target disk. You must specify these values for each system; that’s why it is very important to have located these disks beforehand as in point 2.

**Note:** The above command starts a disk copy 1:1 and in this case the new target disk needs to have at least the same size as the original source disk, or bigger.

- Once the disk copy process is finished, both disks are set to offline status. This is to avoid any possible conflict of two disks with two identical disk signatures.

On the main menu, go to “Operation” > “Exit” > “Shutdown”.

- Disconnect the original source disk from the system and change, if necessary, the new target disk to the final connection. Start the system normally.



-- END --